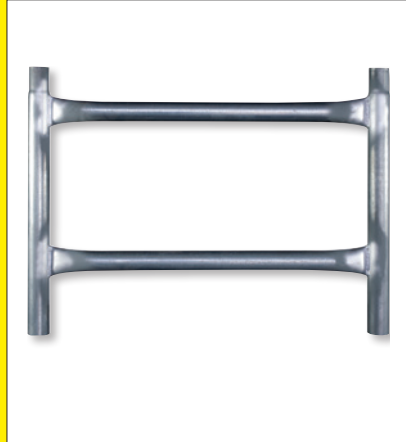


# PRODUCT CATALOGUE

**MAXISKAFF**  
HIGH, STRONG, SAFE & EASY



**1800 NO FALL  
(1800 66 3255)**

**[www.safeaccess.net.au](http://www.safeaccess.net.au)**



<b>Introduction</b>	<b>Ladder Extension Leg</b>	<b>Safety Kick Plate</b>
Maxiskaff - the product ..... 4	LEE ..... 8	SKP7.10..... 12
<b>Standard Components</b>	<b>Ladder Head (External)</b>	SKP7.15..... 12
<b>Adjustable Telescopic Wall Brace</b>	LEH..... 8	SKP7.20..... 12
TWB7..... 5	<b>Ladder Foot - Swivel</b>	SKP7.30..... 12
ATWB10..... 5	LFS ..... 8	SKP10.10..... 13
ATWB15..... 5	<b>Internal Ladder</b>	SKP10.15..... 13
<b>Builders Platform with Trapdoor</b>	LI4 ..... 9	SKP10.20..... 13
BPT10..... 5	LI6 ..... 9	SKP10.30..... 13
BPT15..... 5	LI20 ..... 9	SKP15.15..... 13
BPT20..... 5	LI30 ..... 9	SKP15.20..... 13
<b>Base Brace with Spring End</b>	LI40 ..... 9	SKP15.30..... 13
BB7..... 5	<b>Packer Plank</b>	<b>Sticker - Ladder Danger</b>
BB10..... 5	PP10 ..... 9	SLD..... 13
BB15..... 5	PP15 ..... 9	<b>Sticker - Ladder Limitations</b>
<b>Castor Base</b>	PP20 ..... 9	SLL..... 13
CB..... 5	<b>Plank Support Bar</b>	<b>Sticker - Plant Registration</b>
<b>Heavy Duty Castors - Screw Jack</b>	PSB7 ..... 9	SPRMA..... 13
CHD-SJ..... 5	PSB10..... 9	<b>Safety Rail</b>
<b>Heavy Duty Castors - Castor Base</b>	PSB15..... 9	SR7 ..... 13
CHD-CB ..... 5	PSB20..... 9	SR10..... 14
<b>Diagonal Brace</b>	<b>Plank Support Extender</b>	SR15..... 14
DB7.10..... 6	PSE7 ..... 9	SR20..... 14
DB7.15..... 6	PSE10..... 10	<b>Safety Rail with Swing Bar</b>
DB7.20..... 6	PSE15..... 10	SRA10..... 14
DB10.10..... 6	<b>Plank Support Joiner</b>	SRA15..... 14
DB10.15..... 6	PSJ7 ..... 10	<b>Safety Rail with Access Gate</b>
DB10.20..... 6	PSJ10..... 10	SRAG10..... 14
DB15.15..... 6	PSJ15..... 10	SRAG15..... 14
DB15.20..... 6	<b>Removable Foot - 150 Plate</b>	<b>Safety Rail Access Mid Bar</b>
<b>End Access Ladder Support</b>	RF150CE..... 10	SRAMB..... 14
EALS7..... 6	RF150CO..... 10	<b>Safety Rail Access (Special)</b>
EALS10..... 6	RF150SI..... 10	SRAS10..... 14
<b>Grip Plank</b>	<b>Rubber Mallet</b>	SRAS15..... 14
GP10 ..... 6	RM24 ..... 10	<b>Safety Rail Access Swing Bar</b>
GP15 ..... 6	<b>Safety Bar (Cup Type)</b>	SRASB..... 14
<b>Grip Plank (Expament)</b>	SBC7..... 10	<b>Safety Rail w Access Gate (Special)</b>
GPE10 ..... 7	SBC10..... 10	SRASG10..... 14
GPE15 ..... 7	SBC15..... 10	SRASG15..... 15
GPE20 ..... 7	SBC20..... 11	<b>Stanchion</b>
<b>Grip Plank (Narrow)</b>	<b>Swing Bar End Access</b>	ST ..... 15
GPN15..... 7	SBE7 ..... 11	<b>Tower Stabiliser</b>
<b>H-Frame</b>	SBE10..... 11	TS25 ..... 15
HF7 ..... 7	<b>Safety Bar (Pin Type)</b>	TS40 ..... 15
HF10 ..... 7	SBP7..... 11	<b>Truss Brace</b>
HF12 ..... 7	SBP10..... 11	TB30 ..... 15
HF15 ..... 7	SBP15..... 11	<b>Vertical Brace</b>
HF20 ..... 7	SBP20..... 11	VB25 ..... 15
HF30 ..... 7	SBP30..... 11	<b>Telescopic Wheel Base</b>
<b>H-Frame (Split)</b>	<b>Safety Bar (Pin Swivel Type)</b>	WBT..... 15
HFS7..... 7	SBPS7 ..... 11	<b>Work Shelf</b>
HFS10..... 7	SBPS10..... 11	WS7 ..... 15
HFS12..... 8	SBPS15..... 11	WS10 ..... 15
HFS15..... 8	SBPS20..... 12	WS15 ..... 15
HFS20..... 8	SBPS30..... 12	<b>Standard Maxiskaff models</b>
<b>Ladder Section</b>	<b>Self Closing Gate for SRA</b>	Standard Maxiskaff Models..... 16
L2 ..... 8	SCG..... 12	<b>Standard Miniskaff models</b>
<b>Ladder Brace</b>	<b>Sticker - Electrical Hazard</b>	Standard Miniskaff Models..... 18
LB..... 8	SHE..... 12	<b>Customised Maxiskaff models</b>
<b>External Ladder</b>	<b>Screw Jacks</b>	Customised Models..... 19
LE4 ..... 8	SJ ..... 12	
LE20 ..... 8	SJ (Acrow) ..... 12	
LE30 ..... 8		



## HIGH, STRONG, SAFE & EASY

MaxiSkaff is ideally suited to Commercial, Industrial, Construction and Building Maintenance industries, both for indoor and outside use.

MaxiSkaff uses the versatile patented "bell swage" design with non interchangeable parts. Its high grade and larger gauge steel allows MaxiSkaff to offer a wider array of configurations, including platforms reaching to far greater heights safely.

Its even greater strength is ideal to carry heavier loads and has been designed specifically for high / constant usage situations – particularly the building trade. MaxiSkaff's design focus was to ensure it would pass the test of time and rigorous industrial punishment in tough environments.

Its primary claims to fame being to provide you with a versatile, fast to erect, strong and highly mobile work safety platform, providing a cost effective alternative to traditional scaffolding and mobile access equipment.

MaxiSkaff's modular design allows our trade customers to break the platform down swiftly, transport it economically in a compact format, and re-erect it at a new site fast. This portability negates the need for forklift cages and tying up additional assets / resources. That saves you time and money! Compared to conventional scaffold systems, MaxiSkaff is strong, simple to assemble and highly versatile, yet still relatively lightweight. The product comes in various sizes and configurations to suit your specific application.

### MAXISKAFF - CUSTOM APPLICATIONS

With a highly talented and committed workforce, our "Custom" design and build capability is second to none. We have designed and delivered many custom projects to blue chip industry leaders across the following sectors: Industrial; Commercial; Construction; Manufacturing; Infrastructure; Maintenance; Building; Mining; Energy; Defence and Utilities.

We work with our clients on-site to identify and understand the issues they have with access or protection of their staff in maintaining and/or operating a diverse range of plant and equipment. This direct "hand-on" approach enables us to understand the problems employees face and we then translate these needs and requirements into a pilot project that forms the basis of the solution. On testing the "pilot", the product is then modified accordingly and adopted across the organisation to mitigate risk and enhance overall organisational compliance and performance. All products are designed and manufactured in accordance with the relevant Australian Standard or applicable Code of Practice or Legislation.



### FEATURES:

- Australian made and owned.
- Quality manufactured safety product.
- Complies with AS/NZS 1576 & AS 1657 standards.
- Registered Plant pursuant to the 1995 NOHS for Plant, registered approval for industrial use.
- Fast to erect modular framing systems.
- Strong and highly mobile.
- Highly versatile, yet relatively light weight.
- Cost effective alternative to traditional scaffolding.
- Suitable alternative to mobile access equipment.
- Negates the need for fork lift cages and tying up additional assets.
- Galvanised or powder coat finish.
- Kits with platform heights from 2m up to 8m.
- Link Maxiskaff towers together with bridges.
- Medium Duty – SWL 450 kgs.

### APPLICATIONS:

- Industrial & Commercial
- Construction
- Manufacturing
- Infrastructure
- Maintenance
- Painting
- Building
- Sign Writing
- Plumbing
- Carpentry
- Mining & Energy
- Defence
- Utilities

#### Part No: ATWB7

Description: Adjustable Telescopic Wall Brace.

Usage: To brace tower against wall in confined areas eg: elevator shafts or between building or fixed structures.

Suit: 700mm wide model.

Finish: Galva Bond or Powder Coat.



#### Part No: ATWB10

Description: Adjustable Telescopic Wall Brace.

Usage: To brace tower against wall in confined areas eg: elevator shafts or between building or fixed structures.

Suit: 1000mm wide model.

Finish: Galva Bond or Powder Coat.



#### Part No: ATWB15

Description: Adjustable Telescopic Wall Brace.

Usage: To brace tower against wall in confined areas eg: elevator shafts or between building or fixed structures.

Suit: 1500mm wide model.

Finish: Galva Bond or Powder Coat.



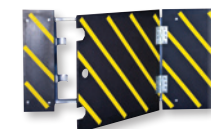
#### Part No: BPT10

Description: Builders Platform with Trapdoor.

Usage: Forms part of the Platform on mobile or fixed scaffold with Internal Ladder access.

Suit: 1000mm wide model.

Finish: Galva Bond.



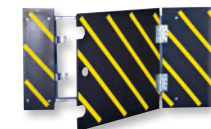
#### Part No: BPT15

Description: Builders Platform with Trapdoor.

Usage: Forms part of the Platform on mobile or fixed scaffold with Internal Ladder access.

Suit: 1500mm wide model.

Finish: Galva Bond.



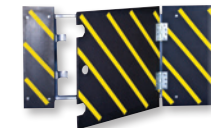
#### Part No: BPT20

Description: Builders Platform with Trapdoor.

Usage: Forms part of the Platform on mobile or fixed scaffold with Internal Ladder access.

Suit: 2000mm wide model.

Finish: Galvabond.



#### Part No: BB7

Description: Base Brace with spring end.

Usage: To support base of tower. Fit at angle. Use on Castor Wheel models.

Suit: 700mm wide model.

Finish: Galva Bond or Powder Coat.



#### Part No: BB10

Description: Base Brace with spring end.

Usage: To support base of tower. Fit at angle. Use on Castor Wheel models.

Suit: 1000mm wide model.

Finish: Galva Bond or Powder Coat.



#### Part No: BB15

Description: Base Brace with spring end. Use on Castor Wheel models.

Usage: To support base of tower. Fit at angle.

Suit: 1500mm wide model.

Finish: Galva Bond or Powder Coat.



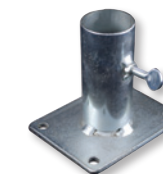
#### Part No: CB

Description: Castor Base.

Usage: When screw jacks not required. Castor bolts directly onto Castor base.

Suit: All Maxi H-Frames.

Finish: Zinc Only.



#### Part No: CHD-SJ

Description: Heavy Duty Castor (200mm diameter) with brake and swivel lock bolted to screw jack with 300mm screw travel. 485kg rating per wheel.

Usage: Castor wheels for use on even and uneven grounds.

Suit: All Maxi H-Frames.

Finish: Zinc Only.



#### Part No: CHD-CB

Description: Heavy Duty Castor (200mm diameter) bolted to Castor Base.

Usage: Castor wheels for use in even grounds only.

Suit: All Maxi H-Frames.

Finish: Zinc to Castor Base.



## Part No: DB7.10

Description: Diagonal Brace to fit from one corner to opposite corner of base of tower in horizontal position. Always fit bottom of tower.

Usage: Fits all models to keep tower square. Always fit to bottom of tower.

Suit: 700mm x 1000mm model.

Finish: Galva Bond or Powder Coat.



## Part No: DB7.15

Description: Diagonal Brace to fit from one corner to opposite corner of base of tower in horizontal position. Always fit bottom of tower.

Usage: Fits all models to keep tower square. Always fit to bottom of tower.

Suit: 700mm x 1500mm model.

Finish: Galva Bond or Powder Coat.



## Part No: DB7.20

Description: Diagonal Brace to fit from one corner to opposite corner of base of tower in horizontal position. Always fit bottom of tower.

Usage: Fits all models to keep tower square. Always fit to bottom of tower.

Suit: 700mm x 2000mm model.

Finish: Galva Bond or Powder Coat.



## Part No: DB10.10

Description: Diagonal Brace to fit from one corner to opposite corner of base of tower in horizontal position. Always fit bottom of tower.

Usage: Fits all models to keep tower square. Always fit to bottom of tower.

Suit: 1000mm x 1000mm model.

Finish: Galva Bond or Powder Coat.



## Part No: DB10.15

Description: Diagonal Brace to fit from one corner to opposite corner of base of tower in horizontal position. Always fit bottom of tower.

Usage: Fits all models to keep tower square. Always fit to bottom of tower.

Suit: 1000mm x 1500mm model.

Finish: Galva Bond or Powder Coat.



## Part No: DB10.20

Description: Diagonal Brace to fit from one corner to opposite corner of base of tower in horizontal position. Always fit bottom of tower.

Usage: Fits all models to keep tower square. Always fit to bottom of tower.

Suit: 1000mm x 2000mm model.

Finish: Galva Bond or Powder Coat.



## Part No: DB15.15

Description: Diagonal Brace to fit from one corner to opposite corner of base of tower in horizontal position. Always fit bottom of tower.

Usage: Fits all models to keep tower square. Always fit to bottom of tower.

Suit: 1500mm x 1500mm model.

Finish: Galva Bond or Powder Coat.



## Part No: DB15.20

Description: Diagonal Brace to fit from one corner to opposite corner of base of tower in horizontal position. Always fit bottom of tower.

Usage: Fits all models to keep tower square. Always fit to bottom of tower.

Suit: 1500mm x 2000mm model.

Finish: Galva Bond or Powder Coat.



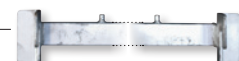
## Part No: EALS7

Description: End Access Ladder Support.

Usage: Fits onto end H-Frames to support External Ladder.

Suit: 700mm wide model.

Finish: Galva Bond or Powdercoated.



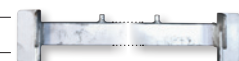
## Part No: EALS10

Description: End Access Ladder Support.

Usage: Fits onto end H-Frames to support External Ladder.

Suit: 1000mm wide model.

Finish: Galva Bond or Powdercoated.



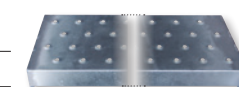
## Part No: GP10

Description: Grip Plank (Phoenix) 300mm wide.

Usage: To form Platform for towers can also be used in conjunction with Trapdoor (BPT).

Suit: 1000mm long models.

Finish: Galva Bond or Powder Coat.



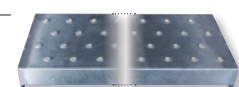
## Part No: GP15

Description: Grip Plank (Phoenix) 300mm wide.

Usage: To form Platform for towers can also be used in conjunction with Trapdoor (BPT).

Suit: 1500mm and 3000mm long models.

Finish: Galva Bond or Powder Coat.



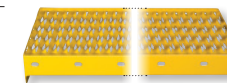
## Part No: GPE10

Description: Grip Plank (Expament). 300mm wide.

Usage: To form Platform for towers can also be used in conjunction with Trapdoor (BPT).

Suit: 1000mm long models.

Finish: Galva Bond or Powder Coat.



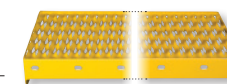
## Part No: GPE15

Description: Grip Plank (Expament). 300mm wide.

Usage: To form Platform for towers can also be used in conjunction with Trapdoor (BPT).

Suit: 1500mm and 3000mm long models.

Finish: Galva Bond or Powder Coat.



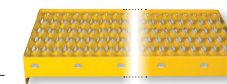
## Part No: GPE20

Description: Grip Plank (Expament). 300mm wide.

Usage: To form Platform for towers can also be used in conjunction with Trapdoor (BPT).

Suit: 2000mm long models.

Finish: Galva Bond or Powder Coat.



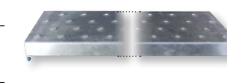
## Part No: GPN15

Description: Grip Plank (Phoenix) 280mm wide.

Usage: To form Platform for towers when standard Grip Plank is too wide. When PSB in use.

Suit: 1500mm and 3000mm long models.

Finish: Galva Bond or Powder Coat.



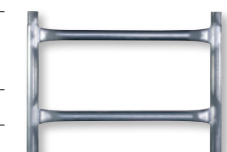
## Part No: HF7

Description: H-Frame Module. 700 x 500mm high.

Usage: Forms tower of Maxiskaff. Mix and match to achieve desired tower base size.

Suit: 700 wide models.

Finish: Galva Bond or Powder Coat.



## Part No: HF10

Description: H-Frame Module. 1000mm x 500mm high.

Usage: Forms tower of Maxiskaff. Mix and match to achieve desired tower base size.

Suit: 1000mm wide or 1000mm long models.

Finish: Galva Bond or Powder Coat.



## Part No: HF12

Description: H-Frame Module. 1200mm x 500mm high.

Usage: Forms tower of Maxiskaff. Mix and match to achieve desired tower base size.

Suit: 1200mm wide or 1200mm long models.

Finish: Galva Bond or Powder Coat.



## Part No: HF15

Description: H-Frame Module. 1500mm x 500mm high.

Usage: Forms tower of Maxiskaff. Mix and match to achieve desired tower base size.

Suit: 1500mm wide or 1500mm long models.

Finish: Galva Bond or Powder Coat.



## Part No: HF20

Description: H-Frame Module. 2000mm x 500mm high.

Usage: Forms tower of Maxiskaff. Mix and match to achieve desired tower base size.

Suit: 2000mm wide or 2000mm long models.

Finish: Galva Bond or Powder Coat.



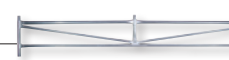
## Part No: HF30

Description: H-Frame Module. 3000mm x 500mm high.

Usage: Forms tower of Maxiskaff. Mix and match to achieve desired tower base size.

Suit: 3000mm long models.

Finish: Galva Bond or Powder Coat.



## Part No: HFS7

Description: H-Frame Split Module. 700mm x 250mm high.

Usage: Forms tower of Maxiskaff. Mix and match to achieve desired tower configuration.

Suit: 700 wide models.

Finish: Galva Bond or Powder Coat.



## Part No: HFS10

Description: H-Frame Split Module. 1000mm x 250mm high.

Usage: Forms tower of Maxiskaff. Mix and match to achieve desired tower configuration.

Suit: 1000mm wide or 1000mm long models.

Finish: Galva Bond or Powder Coat.





## Part No: HFS12

Description: H-Frame Split Module. 1200mm x 250mm high.

Usage: Forms tower of Maxiskaff. Mix and match to achieve desired tower configuration.

Suit: 1200mm wide or 1200mm long models.

Finish: Galva Bond or Powder Coat.



## Part No: HFS15

Description: H-Frame Split Module. 1500mm x 250mm high.

Usage: Forms tower of Maxiskaff. Mix and match to achieve desired tower configuration.

Suit: 1500mm wide or 1500mm long models.

Finish: Galva Bond or Powder Coat.



## Part No: HFS20

Description: H-Frame Split Module. 2000mm x 250mm high and match to achieve desired.

Usage: Forms tower of Maxiskaff. Mix and match to achieve desired tower configuration.

Suit: 2000mm wide or 2000mm long models.

Finish: Galva Bond or Powder Coat.



## Part No: L2

Description: 2 Rung Ladder Section.

Usage: For use with Internal or External Ladders.

Suit: All Ladders.

Finish: Galva Bond or Powder Coat.



## Part No: LB

Description: Ladder Brace for Internal Ladder use with trapdoor Castor models.

Usage: Keeps Ladder away from wall of inside of tower facilitates angle of Ladder for more comfortable climb and also movement of tower.

Suit: All Internal Ladders.

Finish: Galva Bond or Powder Coat.



## Part No: LE4

Description: 4 Rung External Ladder section with Handrails.

Usage: Maximum height of tower for External Ladder is 3.0m to Platform. Attach Ladder sections to Ladder Head to achieve desired height of Ladder.

Suit: External Ladders.

Finish: Galva Bond or Powder Coat.

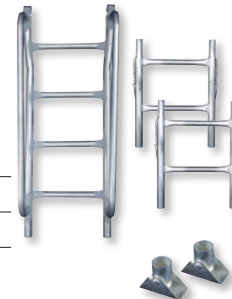


## Part No: LE20

Description: LE20 - 1 x Ladder Head (LEH) plus 2 x 2 Rung (L2) to suit 2.0m tower. Total 8 rungs. Note: Combination enables matching of ladder to various Platform heights. For use on Platform levels 1.0m high, 1.5m high, 2.0m high. (Specifically accompanies 2.0m high towers).

Suit: 2000mm high model.

Finish: Galva Bond or Powder Coat.



## Part No: LE30

Description: LE30 - 1 x Ladder Head (LEH) plus 1 x 4 Rung (LE4) plus 2 x 2 Rung (L2). Total 12 Rungs. Note: Combination enables matching of ladder to various Platform heights.

Usage: For use on Platform levels 1.0m high, 1.5m high, 2.0m high, 2.5m high and 3.0m high. (Specifically accompanies 3.0m high towers).

Suit: 3000mm high model.

Finish: Galva Bond or Powder Coat.



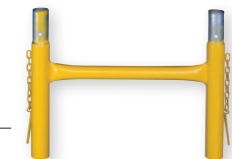
## Part No: LEE

Description: Ladder Extension Leg.

Usage: Use on External Ladder to accommodate extra height of Castor Wheels. Note: Code does state all Castor Wheel towers have Internal Ladder - however some special applications may require External Ladder).

Suit: External Ladders.

Finish: Galva Bond or Powder Coat.



## Part No: LEH

Description: Ladder Head with Hooks at top end and Handrails. For external access. 4 rungs suit 1.0m high Platform.

Usage: Used in conjunction with Safety Rails with swing access bar (SRA). Maximum height of tower for External Ladder is 3.0m to Platform. Attach Ladder sections to Ladder Head to achieve desired height of Ladder.

Suit: All External Ladders.

Finish: Galva Bond or Powder Coat.



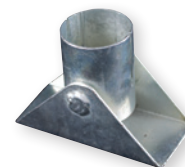
## Part No: LFS

Description: Swivel Foot for External Ladder.

Usage: For External Ladder Foot.

Suit: All External Ladders.

Finish: Galvabond.



## Part No: LI4

Description: Ladder Section. 4 rung.

Usage: Internal use with Trapdoor. To achieve desired Ladder length.

Suit: Internal Ladders.

Finish: Galva Bond or Powder Coat.



## Part No: LI6

Description: Ladder Section. 6 rung.

Usage: Internal use with Trapdoor. To achieve desired Ladder length.

Suit: Internal Ladders.

Finish: Galva Bond or Powder Coat.



## Part No: LI20

Description: Internal Ladder for use with Trapdoor (BPT). For 2.0m high Platform. LI20 - 1 x 6 Rung (LI6) plus 1 x 4 Rung (LI4). Total 10 Rungs.

Usage: Use only on internal access with Trapdoor.

Suit: 2000mm high model.

Finish: Galva Bond or Powder Coat.



## Part No: LI30

Description: Internal Ladder for use with Trapdoor (BPT). For 3.0m high Platform. LI30 - 2 x 6 Rung (LI6) plus 1 x 2 Rung (L2). Total 14 Rungs.

Usage: Use only on internal access with Trapdoor.

Suit: 3000mm high model.

Finish: Galva Bond or Powder Coat.



## Part No: LI40

Description: Internal Ladder for use with Trapdoor (BPT). For 4.0m high Platform. LI40 - 3 x 6 Rung (LI6). Total 18 Rungs.

Usage: Use only on internal access with Trapdoor.

Suit: 4000mm high model.

Finish: Galva Bond or Powder Coat.



## Part No: PP10

Description: 75mm x 1000mm Plank.

Usage: Specifically for filling small gap in 1000mm wide Platform.

Suit: 1000mm long model.

Finish: Galva Bond or Powder Coat.



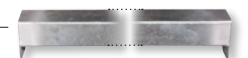
## Part No: PP15

Description: 75mm x 1500mm Plank.

Usage: Specifically for filling small gap in 1000mm wide Platform.

Suit: 1500mm long model.

Finish: Galva Bond or Powder Coat.



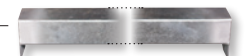
## Part No: PP20

Description: 75mm x 2000mm Plank.

Usage: Specifically for filling small gap in 1000mm wide Platform.

Suit: 2000mm long model.

Finish: Galva Bond or Powder Coat.



## Part No: PSB7

Description: Plank Support Bar 700mm.

Usage: To act as intermediate plank support.

Suit: 700mm wide model.

Finish: Galva Bond or Powder Coat.



## Part No: PSB10

Description: Plank Support Bar 1000mm.

Usage: To act as intermediate plank support.

Suit: 1000mm wide model.

Finish: Galva Bond or Powder Coat.



## Part No: PSB15

Description: Plank Support Bar 1500mm.

Usage: To act as intermediate plank support.

Suit: 1500mm wide model.

Finish: Galva Bond or Powder Coat.



## Part No: PSB20

Description: Plank Support Bar 2000mm.

Usage: To act as intermediate plank support.

Suit: 2000mm wide model.

Finish: Galva Bond or Powder Coat.



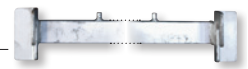
## Part No: PSE7

Description: Plank Support Extender.

Usage: To be fitted at end of scaffold towers to accommodate planks which form a bridge between 2 towers. Also use with 3m long model.

Suit: 700mm wide model.

Finish: Galva Bond or Powder Coat.



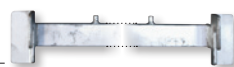
## Part No: PSE10

Description: Plank Support Extender.

Usage: To be fitted at end of scaffold towers to accommodate planks which form a bridge between 2 towers. Also use with 3 metre long model.

Suit: 1000mm wide model.

Finish: Galva Bond or Powder Coat.



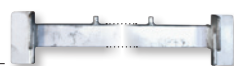
## Part No: PSE15

Description: Plank Support Extender.

Usage: To be fitted at end of scaffold towers to accommodate planks which form a bridge between 2 towers. Also use with 3 metre long model.

Suit: 1500mm wide model.

Finish: Galva Bond or Powder Coat.



## Part No: PSJ7

Description: Plank Support Joiner 700mm.

Usage: Use on 3.0m long tower where the Platform is split. Joiner enables planks to sit end to end and at the same level.

Suit: 700 wide model.

Finish: Galva Bond or Powder Coat.



## Part No: PSJ10

Description: Plank Support Joiner 1000mm.

Usage: Use on 3.0m long tower where the Platform is split. Joiner enables planks to sit end to end and at the same level.

Suit: 1000mm wide model.

Finish: Galva Bond or Powder Coat.



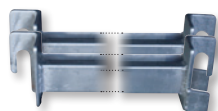
## Part No: PSJ15

Description: Support bar used to join Grip Planks.

Usage: Use on 3.0m long tower where the Platform is split. Joiner enables planks to sit end to end and at the same level.

Suit: 1500mm wide model.

Finish: Galva Bond or Powder Coat.



## Part No: RF150CE

Description: Removable Foot for flat level ground. 150mm x 150mm plate. With centre connector.

Usage: Use only on level ground. Acts as protective base for bottom H-Frames.

Suit: All models

Finish: Zinc only.



## Part No: RF150CO

Description: Removable Foot for flat level ground. 150mm x 150mm plate. With corner connector.

Usage: Use only on level ground. Acts as protective base for bottom H-Frames.

Suit: All models

Finish: Zinc only.



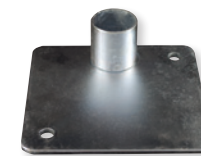
## Part No: RF150SI

Description: Removable Foot for flat level ground. 150mm x 150mm plate. With side connector.

Usage: Use only on level ground. Act as protective base for bottom H-Frames.

Suit: All models.

Finish: Zinc only.



## Part No: RM24

Description: 24 oz. fibre glass handled Rubber Mallet.

Usage: To help assemble and dismantle Maxiskaff models. Gently tap to separate or join components that may be tight fitting.

Suit: All models

Finish: Fibreglass handle with rubber head.



## Part No: SBC7

Description: Safety Bar (Cup type) 700mm.

Usage: Use only on models with Internal Ladder to complete top Safety Rail surround.

Suit: 700mm wide models.

Finish: Galva Bond or Powder Coat.



## Part No: SBC10

Description: Safety Bar (Cup type) 1000mm.

Usage: Use only on models with Internal Ladder to complete top Safety Rail surround.

Suit: 1000mm wide or 1000mm long models.

Finish: Galva Bond or Powder Coat.



## Part No: SBC15

Description: Safety Bar (Cup type) 1500mm.

Usage: Use only on models with Internal Ladder to complete top Safety Rail surround.

Suit: 1500mm wide or 1500 or 3000mm long models.

Finish: Galva Bond or Powder Coat.



## Part No: SBC20

Description: Safety Bar (Cup type) 2000mm.

Usage: Use only on models with Internal Ladder to complete top Safety Rail surround.

Suit: 2000mm long models.

Finish: Galva Bond or Powder Coat.



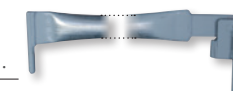
## Part No: SBE7

Description: End Access Swing Bar 700mm.

Usage: Use with Safety Rail surround for External Ladder end access application. Fits into eyelet tubes on Safety Rails and Stanchions (top only).

Suit: 700mm wide model.

Finish: Galva Bond or Powder Coat.



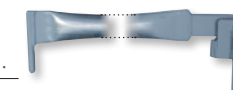
## Part No: SBE10

Description: End Access Swing Bar 1000mm.

Usage: Use with Safety Rail surround for External Ladder end access application. Fits into eyelet tubes on Safety Rails and Stanchions (top only).

Suit: 1000mm wide model.

Finish: Galva Bond or Powder Coat.



## Part No: SBP7

Description: Safety Bar (Pin type) 700mm.

Usage: Use with Safety Rail surround for External Ladder access application. Fits into eyelet tubes on Safety Rails and Stanchions (top only).

Suit: 700mm wide model.

Finish: Galva Bond or Powder Coat.



## Part No: SBP10

Description: Safety Bar (Pin type) 1000mm.

Usage: Use with Safety Rail surround for External Ladder access application. Fits into eyelet tubes on Safety Rails and Stanchions (top only).

Suit: 1000mm wide or 1000m long model.

Finish: Galva Bond or Powder Coat.



## Part No: SBP15

Description: Safety Bar (Pin type) 1500mm.

Usage: Use with Safety Rail surround for External Ladder access application. Fits into eyelet tubes on Safety Rails and Stanchions (top only).

Suit: 1500mm wide or 1500 and 3000mm long model.

Finish: Galva Bond or Powder Coat



## Part No: SBP20

Description: Safety Bar (Pin type) 2000mm.

Usage: Use with Safety Rail surround for External Ladder access application. Fits into eyelet tubes on Safety Rails and Stanchions(top only).

Suit: 2000mm long model.

Finish: Galva Bond or Powder Coat.



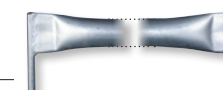
## Part No: SBP30

Description: Safety Bar (Pin type) 300mm.

Usage: Use with Safety Rail surround for External Ladder access application. Fits into eyelet tubes on Safety Rails and Stanchions(top only).

Suit: 3000mm long model.

Finish: Galva Bond or Powder Coat.



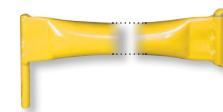
## Part No: SBPS7

Description: Safety Bar (Pin Swivel type) 700mm.

Usage: Use with Safety Rail surround for External Ladder application. Use as mid Safety Bar. Fits into eyelet tubes on Safety Rails and Stanchions(midway). Positioned underneath eith work shelf or SBPs. Reduce gaps between top SBP and Platform.

Suit: 700mm wide model.

Finish: Galva Bond or Powder Coat.



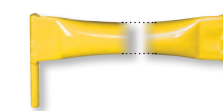
## Part No: SBPS10

Description: Safety Bar (Pin Swivel type) 1000mm.

Usage: Use with Safety Rail surround for External Ladder application. Use as mid Safety Bar. Fits into eyelet tubes on Safety Rails and Stanchions (midway). Positioned underneath with work shelf or SBPs. Reduce gaps between top SBP and Platform.

Suit: 1000mm wide or 1000m long model.

Finish: Galva Bond or Powder Coat.



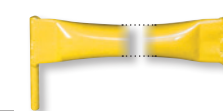
## Part No: SBPS15

Description: Safety Bar (Pin Swivel type) 1500mm.

Usage: Use with Safety Rail surround for External Ladder application. Use as mid Safety Bar. Fits into eyelet tubes on Safety Rails and Stanchions (midway). Positioned underneath eith work shelf or SBPs. Reduce gaps between top SBP and Platform.

Suit: 1500mm wide or 1500 and 3000mm long model.

Finish: Galva Bond or Powder Coat.





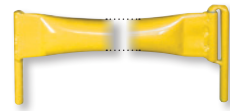
### Part No: SBPS20

Description: Safety Bar (Pin Swivel type) 200mm.

Usage: Use with Safety Rail surround for External Ladder application. Use as mid Safety Bar. Fits into eyelet tubes on Safety Rails and Stanchions (midway). Positioned underneath eith work shelf or SBPs. Reduce gaps between top SBP and Platform.

Suit: 2000mm long model.

Finish: Galva Bond or Powder Coat.



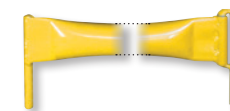
### Part No: SBPS30

Description: Safety Bar (Pin Swivel type) 3000mm.

Usage: Use with Safety Rail surround for external ladder application. Use as mid Safety Bar. Fits into eyelet tubes on Safety Rails (midway) and underneath eith work shelf or SBPs. Reduce gaps between top SBP and Platform.

Suit: 3000mm long model.

Finish: Galva Bond or Powder Coat.



### Part No: SCG

Description: Self Closing Gate.

Usage: For use with External Ladder and Safety Rail Access. To access Platform.

Suit: All types of 1000mm and 1500mm Safety Rails with access.

Finish: Galva Bond or Powder Coat.



### Part No: SHE

Description: Electrical Hazard warning sign.

Usage: Must be visible on all models. Usually placed on each end of Grip Planks.

Suit: All models.

Finish: Stick on.



### Part No: SJ

Description: Screw Jacks.

Usage: To bolt on top of Castor plate or to use for uneven ground with Castor removed.

Suit: Maxiskaff with base Castors (3000mm screw travel). Can be used with or without Castors attached.

Finish: Zinc only.



### Part No: SJ (Acrow)

Description: Screw Jacks with larger base dimensions.

Usage: Use for uneven ground when Castor or mobile scaffold is not required.

Suit: Fixed towers only.

Finish: Zinc only.



### Part No: SKP7.10

Description: Safety Kick Plate (150mm high) to be used on all towers over 2.0m Platform height.

Usage: To fit to outer edge of Platform and reduce risk of loose tools etc. being accidentally kicked off Platform. Mandatory from 2.0m Platform height.

Suit: 700mm x 1000mm model.

Finish: Galva Bond only.



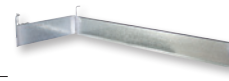
### Part No: SKP7.15

Description: Safety Kick Plate (150mm high) to be used on all towers over 2.0m Platform height.

Usage: To fit to outer edge of Platform and reduce risk of loose tools etc. being accidentally kicked off Platform. Mandatory from 2.0m Platform height.

Suit: 700mm x 1500mm model.

Finish: Galva Bond only.



### Part No: SKP7.20

Description: Safety Kick Plate (150mm high) to be used on all towers over 2.0m Platform height.

Usage: To fit to outer edge of Platform and reduce risk of loose tools etc. being accidentally kicked off Platform. Mandatory from 2.0m Platform height.

Suit: 700mm x 2000mm model.

Finish: Galva Bond only.



### Part No: SKP7.30

Description: Safety Kick Plate (150mm high) to be used on all towers over 2.0m Platform height.

Usage: To fit to outer edge of Platform and reduce risk of loose tools etc. being accidentally kicked off Platform. Mandatory from 2.0m Platform height.

Suit: 700mm x 3000mm model.

Finish: Galva Bond only.



### Part No: SKP10.10

Description: Safety Kick Plate (150mm high) to be used on all towers over 2.0m Platform height.

Usage: To fit to outer edge of Platform and reduce risk of loose tools etc. being accidentally kicked off Platform. Mandatory from 2.0m Platform height.

Suit: 1000mm x 1000mm model.

Finish: Galva Bond only.



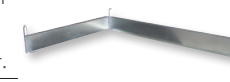
### Part No: SKP10.15

Description: Safety Kick Plate (150mm high) to be used on all towers over 2.0m Platform height.

Usage: To fit to outer edge of Platform and reduce risk of loose tools etc. being accidentally kicked off Platform. Mandatory from 2.0m Platform height.

Suit: 1000mm x 1500mm model.

Finish: Galva Bond only.



### Part No: SKP10.20

Description: Safety Kick Plate (150mm high) to be used on all towers over 2.0m Platform height.

Usage: To fit to outer edge of Platform and reduce risk of loose tools etc. being accidentally kicked off Platform. Mandatory from 2.0m Platform height.

Suit: 1000mm x 2000mm model.

Finish: Galva Bond only.



### Part No: SKP10.30

Description: Safety Kick Plate (150mm high) to be used on all towers over 2.0m Platform height.

Usage: To fit to outer edge of Platform and reduce risk of loose tools etc. being accidentally kicked off Platform. Mandatory from 2.0m Platform height.

Suit: 1000mm x 3000mm model.

Finish: Galva Bond only.



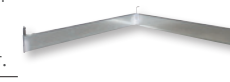
### Part No: SKP15.15

Description: Safety Kick Plate (150mm high) to be used on all towers over 2.0m Platform height.

Usage: To fit to outer edge of Platform and reduce risk of loose tools etc. being accidentally kicked off Platform. Mandatory from 2.0m Platform height.

Suit: 1500mm x 1500mm model.

Finish: Galva Bond only.



### Part No: SKP15.20

Description: Safety Kick Plate (150mm high) to be used on all towers over 2.0m Platform height.

Usage: To fit to outer edge of Platform and reduce risk of loose tools etc. being accidentally kicked off Platform. Mandatory from 2.0m Platform height.

Suit: 1500mm x 2000mm model.

Finish: Galva Bond only.



### Part No: SKP15.30

Description: Safety Kick Plate (150mm high) to be used on all towers over 2.0m Platform height.

Usage: To fit to outer edge of Platform and reduce risk of loose tools etc. being accidentally kicked off Platform. Mandatory from 2.0m Platform height.

Suit: 1500mm x 3000mm model.

Finish: Galva Bond only.



### Part No: SLD

Description: Ladder Danger warning sign.

Usage: Must be visible on all models. Usually placed on top ladder section.

Suit: All models.

Finish: Stick on.



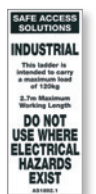
### Part No: SLL

Description: Ladder Limitation warning sign.

Usage: Must be visible on all models. Usually placed on top ladder section.

Suit: All models.

Finish: Stick on.



### Part No: SPRMA

Description: Plant Registration Sticker.

Usage: Must be visible on all H-Frames.

Suit: All models.

Finish: Stick on.



### Part No: SR7

Description: Safety Rail 700mm.

Usage: Use only with fixed or tilt to wheel scaffold and/or External Ladder. Used to form full safety surround in conjunction with (SBP) (SRA) (WS).

Suit: 700 wide Maxi models.

Finish: Galva Bond or Powder Coat



## Part No: SR10

Description: Safety Rail 1000mm.

Usage: Use only with fixed or tilt to wheel scaffold and/or External Ladder. Used to form full safety surround in conjunction with (SBP) (SRA) (WS).

Suit: 1000 wide Maxi models.

Finish: Galva Bond or Powder Coat.



## Part No: SR15

Description: Safety Rail 1500mm.

Usage: Use only with fixed or tilt to wheel scaffold and/or External Ladder. Used to form full safety surround in conjunction with (SBP) (SRA) (WS).

Suit: 1500 wide Maxi models.

Finish: Galva Bond or Powder Coat.



## Part No: SR20

Description: Safety Rail 2000mm.

Usage: Use only with fixed or tilt to wheel scaffold and/or External Ladder. Used to form full safety surround in conjunction with (SBP) (SRA) (WS).

Suit: 2000 wide Maxi models.

Finish: Galva Bond or Powder Coat.



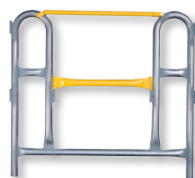
## Part No: SRA10

Description: Safety Rail with Swing Bar Access.

Usage: Used like SR but Ladder Hooks to bottom. Top of Safety Rail has a Swing Bar Access.

Suit: 1000 wide Maxi models.

Finish: Galva Bond or Powder Coat.



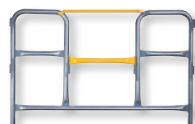
## Part No: SRA15

Description: Safety Rail with Swing Bar Access.

Usage: Used like SR but Ladder Hooks to bottom. Top of Safety Rail has a Swing Bar Access.

Suit: 1500 wide Maxi models.

Finish: Galva Bond or Powder Coat.



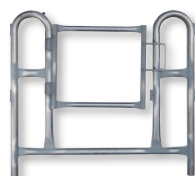
## Part No: SRAG10

Description: Safety Rail with Access Gate.

Usage: Used like SR but ladder hooks to bottom. Top of safety rail has self closing gate access.

Suit: 1000 wide Maxi models.

Finish: Galva Bond or Powder Coat.



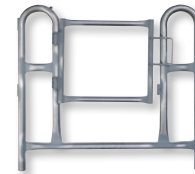
## Part No: SRAG15

Description: Safety Rail with Access Gate.

Usage: Used like SR but Ladder Hooks to bottom. Top of Safety Rail has Self Closing Gate Access.

Suit: 1500 wide Maxi models.

Finish: Galva Bond or Powder Coat.



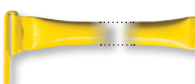
## Part No: SRAMB

Description: Mid Bar for SRA.

Usage: Used in conjunction with SRA with Swing Bar Access.

Suit: 1000mm and 1500mm wide Maxi models.

Finish: Galva Bond or Powder Coat.



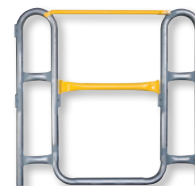
## Part No: SRAS10

Description: Safety Rail with Access Gate. Special low access rail to eliminate trip hazard.

Usage: Used like SR but Ladder Hooks to bottom and top of Safety Rail has Swing Bar Access.

Suit: 1000 wide Maxi models.

Finish: Galva Bond or Powder Coat.



## Part No: SRAS15

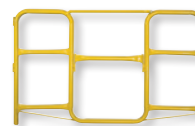
Description: Safety Rail with Access Gate.

Special low access rail to eliminate trip zone.

Usage: Used like SR but Ladder Hooks to bottom. Top of Safety Rail has Swing Bar Access.

Suit: 1500 wide Maxi models.

Finish: Galva Bond or Powder Coat.



## Part No: SRASB

Description: Swing Bar for SRA.

Usage: Used for access for SRA.

Suit: All Safety Rails with Access.

Finish: Galva Bond or Powder Coat.



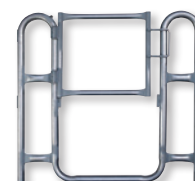
## Part No: SRASG10

Description: Safety Rail with Access Gate. Special low access rail to eliminate trip hazard.

Usage: Used like SR but Ladder Hooks to bottom. Top of Safety Rail has Self Closing Gate Access.

Suit: 1000 wide Maxi models.

Finish: Galva Bond or Powder Coat.



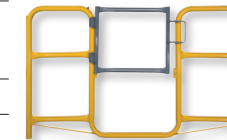
## Part No: SRASG15

Description: Safety Rail with Access Gate. Special low access rail to eliminate trip hazard.

Usage: Used like SR but Ladder Hooks to bottom. Top of Safety Rail has Self Closing Gate Access.

Suit: 1500 wide Maxi models.

Finish: Galva Bond or Powder Coat.



## Part No: ST

Description: 1000mm high Stanchion.

Usage: Variation from Safety Rail to form safety surround. Used in conjunction with Safety Bars.

Suit: All models.

Finish: Galva Bond or Powder Coat.



## Part No: TS25

Description: Tower Stabiliser 2.5m long. Use TS25 up to 6.0m Platform height.

Usage: Use when height is required that exceeds the safe Platform height/tower ratio. Used to increase base size.

Suit: Models less than 6 metres high.

Finish: Galva Bond only.



## Part No: TS40

Description: Tower Stabiliser 4.0m long. Use TS40 beyond 6.0m Platform height. (4.0m has double brace arms).

Usage: Use when height is required that exceeds the safe Platform height/tower ratio. Used to increase base size.

Suit: Models greater than 6 metres high.

Finish: Galva Bond only.



## Part No: TB30

Description: Truss Brace 3.0m.

Usage: To use on tower that is built on mobile base frame which exceeds the size of the tower (and in some cases eliminates the need for tower stabilisers). Truss brace is positioned from base frames to tower and thereby supports the tower.

Suit: 'Tower - Bridge - Tower' Configuration.

Finish: Galva Bond or Powder Coat.



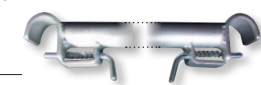
## Part No: VB25

Description: Vertical Brace 2.5m long.

Usage: Used on models that exceed 4.5m high. Are used at opposite angle and serves to brace and strengthen tower. Attaches with spring bolt to inside of tower.

Suit: Models above 4500mm high.

Finish: Galva Bond or Powder Coat.



## Part No: WBT

Description: Telescopic Wheel Base for tilt to wheel towers. Not used above 3.0m Platform height and base of towers no larger than 1.0m x 1.5m. Consists of two wheels frame pods and connecting telescopic bar which can be reduced for smaller width model 700w.

Usage: 'Tilt to wheel' models only. Screw jacks are not incorporated with WBT but can only be positioned at opposite end of tower in place of removable feet (RF).

Suit: All 700mm and 1000mm wide 'Tilt to Wheel' models.

Finish: Zinc or Powder Coated.



## Part No: WS7

Description: Work Shelf. 50mm deep trap by 350mm. Only use on 'tilt to wheel' models and models with external ladder access.

Usage: Doubles as Safety Rail and is used as shelf to position light loose tools paint tins etc.

Suit: 700 wide Maxi models.

Finish: Galva Bond or Powder Coat.



## Part No: WS10

Description: Work Shelf. 50mm deep trap by 350mm. Only use on 'tilt to wheel' models and models with external ladder access.

Usage: Doubles as Safety Rail and is used as shelf to position light loose tools paint tins etc.

Suit: 1000 wide Maxi models.

Finish: Galva Bond or Powder Coat.



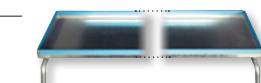
## Part No: WS15

Description: Work Shelf. 50mm deep trap by 350mm. Only use on tilt to wheel models and models with external ladder access.

Usage: Doubles as Safety Rail and is used as shelf to position light loose tools paint tins etc.

Suit: 1500 wide Maxi models.

Finish: Galva Bond or Powder Coat.





## 07.15/20 - 'Tilt To Wheel'

Dimensions: 700mm x 1500mm x 2000mm high.



## 07.30/40 - 'Mobile'

Dimensions: 700mm x 3000mm x 4000mm high.



## 10.15/30 - 'Tilt To Wheel'

Dimensions: 1000mm x 1500mm x 3000mm high.



## 15.15/30 - Mobile

Dimensions: 1500mm x 1500mm x 3000mm high.



## 07.20/20 - 'Mobile'

Dimensions: 700mm x 2000mm x 2000mm high.



## 10.10/30 - 'Tilt To Wheel'

Dimensions: 1000mm x 1000mm x 3000mm high.



## 15.20/40 - Mobile

Dimensions: 1500mm x 2000mm x 4000mm high.



## 15.30/30 - Mobile

Dimensions: 1500mm x 3000mm x 3000mm high.





## MINISKAFF

Miniskaff is perfect for commercial use where a light, but safe, access is required. Ideal for Trade use for Electricians, Plumbers, Painters, Gardeners, Gutter Cleaners or Ceiling Fixers.

### FEATURES:

- Quality manufactured safety product.
- 'Plant Registered' design code AS 1576. 1:2010 – Type minor scaffold.
- Light Duty – SWL 225kg.
- A safe alternative to ladders.
- Takes minutes to assemble. Incentive even for the smallest jobs.
- Three standard sizes. For differing height reaches, lengths and configurations.
- Is light weight. Each H-Frame piece weighs less than 5 kg.
- Quick and easy to move. Mobile on 'Tilt to Wheel'.
- Highly portable. Fits in the boot of a standard car.
- Easy to store. Disassembles to pack flat.

### 612 - Plant Registered

Dimensions: 680mm x 980mm x 1800mm high.



### 912 - Plant Registered

Dimensions: 980mm x 980mm x 1200mm high.



### 918 - Plant Registered

Dimensions: 980mm x 980mm x 1800mm high.



### Truck Maintenance Platform

Description: Designed to work around truck cab area and above chassis, up to back of cab.



### End Access Platform

Description: Example of Maxiskaff unit that enables end access to work platform. Ideal if working in narrow space, where side access is restricted. i.e. - working between tanks or machinery.



### Hut Access Platform with Access Steps

Description: To provide a level access to doorways in huts or buildings. Provides a safe standing area, when door is opened.



### Dual Access Platform

Description: Enables two way step access to higher work area.





### Pipe Step Over Unit

Description: Enables safe access over pipe work or cable trays.



### Linear Rod Pump Access Platform

Description: Designed to build around pipe work and access to pumps and associated hydraulics.



### Tank Access Platform

Description: Designed to allow checking of tank levels and connecting pipework.



### Cattle Proof Fencing

Description: Light duty fencing, to prevent cattle from accessing machinery and tanks



### Access Platform with Removable Rails

Description: Allows for removal of one section of the safety surround, to access a work space, once entire unit has been built.



### 3 Part Access Platform

Description: Portable unit, purpose built to access small drilling rig hydraulics and rods.



### 6 Step Access Platform

Description: Allows close access to valves and hydraulics, when tools and large components need to be carried up onto platform.



### Tower - Bridge - Tower

Description: Gives a wider working platform on pipe work or electrical work.







## Notes



## OFFICE LOCATION

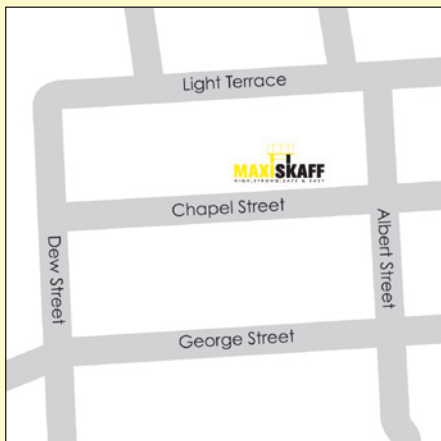
Adelaide

52-58 Chapel Street  
Thebarton  
South Australia 5031  
Australia

Phone: 1800 NO FALL  
(1800 66 3255)

08 8352 1288

Fax: 08 8352 1299



**MAXISKAFF**  
HIGH, STRONG, SAFE & EASY

**MINISKAFF**  
LIGHT, STRONG, SAFE & EASY

**MAESTRO**  
STAGING & SEATING

